



The women's cropped hoodie sweatshirt

Medium Fit

XS XL

300 GSM

Details

- Raglan sleeve
- Lined hood in single jersey
- Inside herringbone back neck tape
- Self fabric half moon at back neck
- Single needle topstitch at neckline and bottom hem
- 1x1 rib at sleeve hem with twin needle topstitch
- Round drawcords at bottom hem in matching body colour with metal tipping
- Metal eyelets

Composition

Shell - Brushed
 85% Cotton - Organic Ring Spun Combed , 15% Polyester - Recycled - 300 GSM
 Fabric washed , Light sueded

Care

Wash similar colours together, do not iron on print,
 wash and iron inside out.



Country of origin

Weaving : Bangladesh
 Dyeing : Bangladesh
 Assembly : Bangladesh



Whites



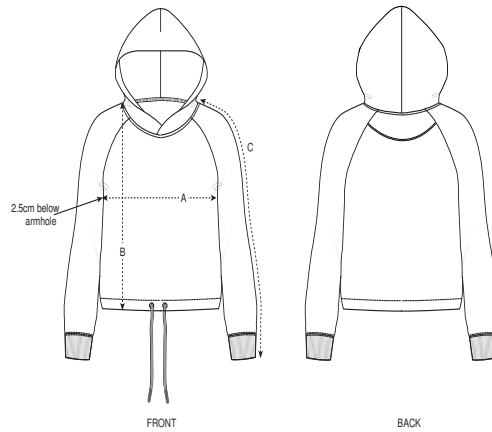
Colors



Essential Heathers



Size Guide



Sizes		XS	S	M	L	XL
A	Half Chest	50.5	53	56	59	62
B	Body Length	55	57	59	61	62
C	Sleeve Length	67.8	69	70.5	71.8	73

Packing

Sizes		XS	S	M	L	XL
	Pieces/bag	5	5	5	5	5
	Pieces/box	20	20	20	20	20