



The women's oversized crew neck dress

Oversized

XS XXL

300 GSM

Details

- Set-in sleeve
- 1x1 rib at neck collar, sleeve hem and bottom hem
- Inside herringbone back neck tape
- Self fabric half moon at back neck
- Sleeve hem and bottom hem with single needle topstitch

Composition

Shell - French Terry  
 85% Cotton - Organic Ring Spun Combed , 15% Polyester - Recycled - 300 GSM  
 Fabric washed , Light sueded

Care

Wash similar colours together, no ironing on print,  
 wash and iron inside out.

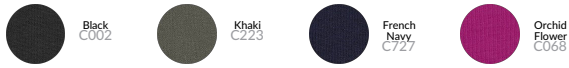


Country of origin

Weaving : Bangladesh  
 Dyeing : Bangladesh  
 Assembly : Bangladesh



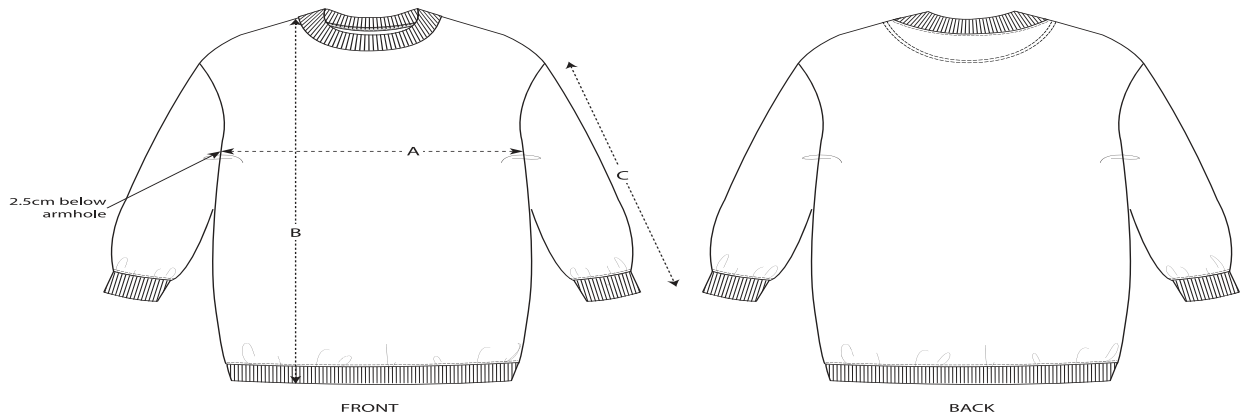
Colors



Essential Heathers



Size Guide



Sizes		XS	S	M	L	XL	XXL
A	Half Chest	58.5	61	64	67	70	73
B	Body Length	87	89	91	93	94	95
C	Sleeve Length	54	54	55	55.5	56	56

Packing

Sizes		XS	S	M	L	XL	XXL
	Pieces/bag	5	5	5	5	5	5
	Pieces/box	20	20	20	20	20	20