

PROACT.®

REFERENCE : PA484

SIZES : 6/8_8/10_10/12_12/14

COMPOSITION :

Main fabric : Interlock Cool Plus / Polyester - 145 50%polyester
'Cool Plus' / 50%polyester

WEIGHT :

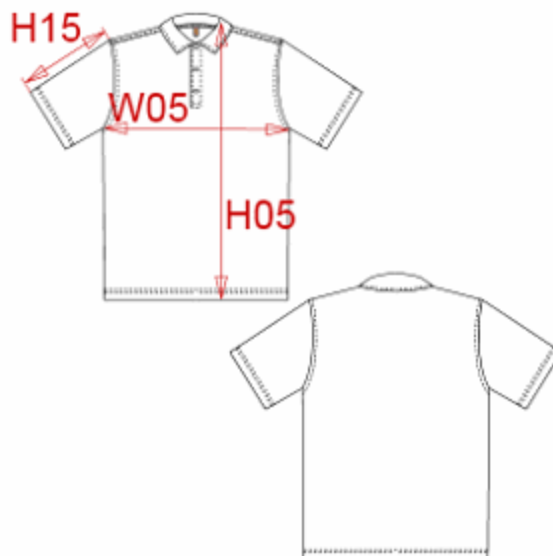
Main fabric : 145 gsm

FABRIC CONSTRUCTION AND FINISHING :

Moisture control fabric

ARTICLE WEIGHT :

105gr/pc



| DESCRIPTION | | | | | | | | | | COLORS | | PANTONE SERIGRAPHIE | | |
|--|---|--------------------|-------|-------|-------|-------|--|--|--|--------|-------|---------------------|-------|--|
| Français : Polo manches courtes COOL PLUS® enfant English : Kids' Cool Plus® polo shirt Nederlands : Deutsch : KINDER KURZARM-POLO COOL PLUS® Español : POLO "COOL PLUS®" DE MANGA CORTA PARA NIÑO Italiano : POLO BAMBINO MANICHE CORTE TESSUTO COOL PLUS ® Português : Polo de criança manga curta Cool Plus® | | | | | | | | | | White | White | Red | 200C | |
| | | | | | | | | | | Navy | 296C | Aqua blue | 7690C | |
| | | | | | | | | | | Lime | 367C | Orange | 1585C | |
| MEASUREMENT | | | | | | | | | | | | | | |
| Description | Tol +/- | Tol +/- Taille max | 6/8 | 8/10 | 10/12 | 12/14 | | | | | | | | |
| H05 Hauteur totale / Total height | | | 53 | 58 | 63 | 68 | | | | | | | | |
| W05 1/2 largeur poitrine / 1/2 chest width | 3,5% | 3,5% | 37 | 40 | 43 | 46 | | | | | | | | |
| H15 Longueur dessus de manche / Sleeve length | | | 12,50 | 15,50 | 18,50 | 21,25 | | | | | | | | |
| CARE LABEL | | | | | | | | | | | | | | |
| | | | | | | | | | | | | | | |
| PACKING | | | | | | | | | | | | | | |
| Box | 25 pcs / box 6/8-8/10 => L:42cm W:32cm H:15cm GW:4.00kg NW:3.00kg 10/12-12/14 => L:44cm W:34cm H:15cm GW:4.30kg NW:3.30kg | | | | | | | | | | | | | |