

# KARIBAN

**REFERENCE :** KV2308

**SIZES :** XS\_S\_M\_L\_XL\_XXL\_3XL

**COMPOSITION :**

Main fabric : Peached and brushed Cotton / Polyester fleece  
80/20 - 350 For main fabric, hood lining and hood binding. 80%  
cotton / 20%polyester

Main fabric : Peached and brushed Cotton / Polyester / Viscose  
fleece 79/20/1 - 350 For main fabric, hood lining and hood  
binding. 79%cotton/20%polyester/1%viscose

**WEIGHT :**

Main fabric : 350 gsm

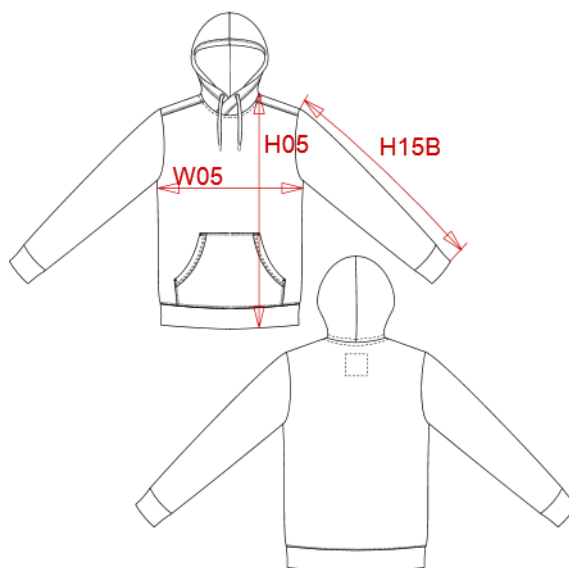
Main fabric : 350 gsm

**TECHNICAL DETAIL :**

Peach

**ARTICLE WEIGHT :**

790 gr/pc



DESCRIPTION
<b>Français :</b> Sweat-shirt capuche
<b>English :</b> Hooded sweatshirt
<b>Nederlands :</b> Sweater met capuchon
<b>Deutsch :</b> Kapuzensweatshirt
<b>Español :</b> Sudadera con capucha
<b>Italiano :</b> Felpa con cappuccio
<b>Português :</b> Sweatshirt com capuz

COLORS	PANTONE SERIGRAPHIE
Vintage navy	533C
Vintage charcoal	447C
Vintage dark red	202C
Ash heather	Based on Warm gray 1C
Slub grey heather	Based on 7539C
Night blue heather	Based on 432C

MEASUREMENT							
Description	XS	S	M	L	XL	XXL	3XL
<b>H05 (M)</b> Hauteur totale / Total height	69	71	73	75	77	79	81
<b>W05 (M)</b> 1/2 largeur poitrine à 1.5cm de l'emmanchure / 1/2 chest width at 1.5cm below armhole	49	52	55	58	61	64	67
<b>H15B (M)</b> Longueur manche avec poignet / Sleeve length with cuff	65,25	66,25	67,25	68,25	69,25	70,25	71,25

CARE LABEL

PACKING	
Box	16 pcs / box XS => L:60cm W:40cm H:36cm GW:12.7kg NW:11.2kg S => L:60cm W:40cm H:36cm GW:13.3kg NW:11.8kg M => L:60cm W:40cm H:36cm GW:14.1kg NW:12.6kg L => L:60cm W:40cm H:38cm GW:14.5kg NW:13kg XL => L:60cm W:40cm H:38cm GW:15.2kg NW:13.7kg XXL => L:60cm W:40cm H:40cm GW:15.7kg NW:14.2kg 3XL => L:60cm W:40cm H:40cm GW:16.4kg NW:14.9kg