

KARIBAN

REFERENCE : K961

SIZES : S_M_L_XL_XXL_3XL_4XL

COMPOSITION :

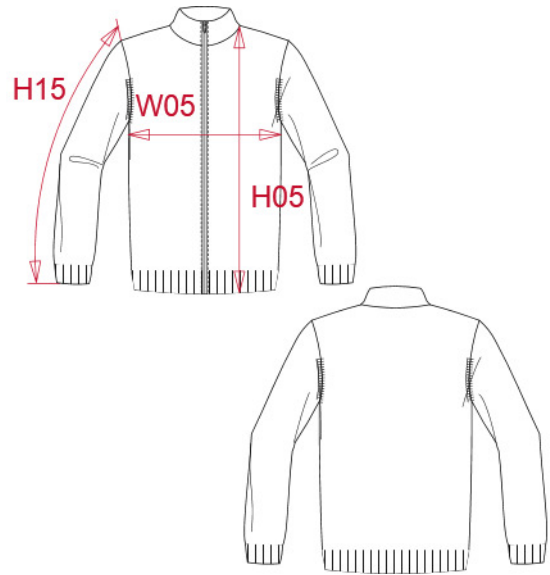
Main fabric : Knit Cotton / Acrylic yarn (32/2) 50/50 - 290 50% cotton / 50%acrylic

WEIGHT :

Main fabric : ± 290 gsm

ARTICLE WEIGHT :

500 gr/pc



DESCRIPTION
Français : Cardigan homme zippé
English : Men's zip cardigan
Nederlands : Heren vestje met rits
Deutsch : Herren strickjacke
Español : Chaqueta con cremallera
Italiano : Cardigan uomo full zip
Português : Casaco de malha

COLORS	PANTONE SERIGRAPHIE
Black	Black
Grey melange	Based on 402C
Navy	433C

MEASUREMENT							
Description	S	M	L	XL	2XL	3XL	4XL
H05 (M) Hauteur totale / Total height	68	70	72	74	76	78	80
W05 (M) 1/2 largeur poitrine à 1.5cm de l'emmanchure / 1/2 chest width at 1.5cm below armhole	50	53	56	59	62	65	68
H15I (M) Longueur manche avec bord côte / Sleeve length with rib	64,50	66,50	68,50	70,50	72,50	74,50	76,50

CARE LABEL

PACKING	
Box	10 pcs / box S => L:60cm W:40cm H:15cm GW:4.20kg NW:5.80kg M => L:60cm W:40cm H:15cm GW:4.40kg NW:6.00kg L => L:60cm W:40cm H:15cm GW:4.70kg NW:6.30kg XL => L:60cm W:40cm H:15cm GW:5.00kg NW:6.60kg XXL => L:60cm W:40cm H:15cm GW:5.30kg NW:6.90kg 3XL => L:60cm W:40cm H:15cm GW:5.70kg NW:7.30kg 4XL => L:60cm W:40cm H:15cm GW:5.90kg NW:7.50kg