

# KARIBAN

**REFERENCE :** K830

**SIZES :** 6M\_9M\_12M\_18M

**COMPOSITION :**

Main fabric : French Terry Cotton / Viscose 85/15 fleece - 300  
For melange color 85%cotton/15%viscose

Main fabric : French Terry Cotton fleece - 300 For solid color  
100%cotton

Fabric 2 : Good carded cotton single jersey 180 For solid color  
For inner hood, piping and necktape 100%cotton

Fabric 2 : Good carded Cotton / Viscose Single jersey 85/15 -  
180 For melange color

For inner hood, piping and necktape 85%cotton/15%viscose

**WEIGHT :**

Main fabric : 300 gsm

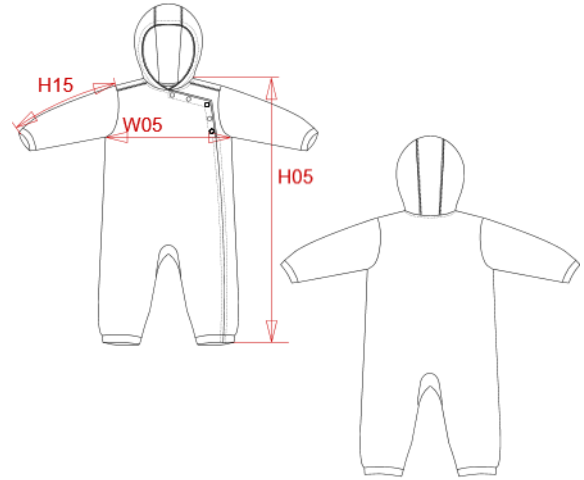
Main fabric : 300 gsm

Fabric 2 : 180 gsm

Fabric 2 : 180 gsm

**ARTICLE WEIGHT :**

235 gr/pc



DESCRIPTION	
<b>Français :</b>	Grenouillère bébé avec capuche
<b>English :</b>	Babies' hooded rompers
<b>Nederlands :</b>	Babypakje met capuchon
<b>Deutsch :</b>	Baby Strampelhose mit Kapuze
<b>Español :</b>	Mono con capucha para bebé
<b>Italiano :</b>	TUTINA BABY CON CAPPuccio
<b>Português :</b>	Macacão de criança com capuz

COLORS	PANTONE SERIGRAPHIE
Oxford grey / Navy	Based on Cool gray 7C / 433C
Navy / Oxford grey	433C / Based on Cool gray 7C

MEASUREMENT						
Description	6M	9M	12M	18M		
<b>H05</b> Hauteur totale / Total height	58	60,50	63	68		
<b>W05</b> 1/2 largeur poitrine / 1/2 chest width	23,30	24,75	26	27		
<b>H15</b> Longueur manche / Sleeve length	24	25,25	26,50	29		

CARE LABEL				

PACKING	
Box	10 pcs / box 6M => L:46cm W:29cm H:13cm GW:3.50kg NW:2.50kg 9M => L:46cm W:29cm H:13cm GW:3.70kg NW:2.70kg 12M => L:50cm W:30cm H:15cm GW:3.80kg NW:2.80kg 18M => L:50cm W:30cm H:15cm GW:4.00kg NW:3.00kg