

# KARIBAN

**REFERENCE :** K455

**SIZES :** 6/8\_8/10\_10/12\_12/14

**COMPOSITION :**

Main fabric : Brushed Cotton / Polyester fleece 80/20 - 300  
80%cotton / 20%polyester

Lining 1 : Cotton thermal - 215 For hood lining 100%cotton

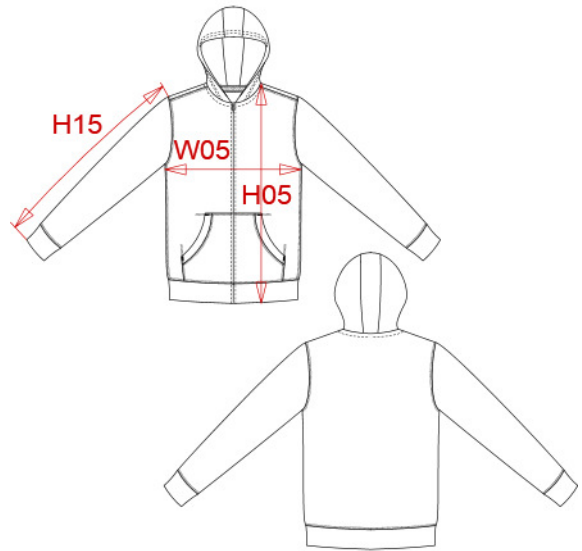
**WEIGHT :**

Main fabric : 300 gsm

Lining 1 : 215 gsm

**ARTICLE WEIGHT :**

345 gr/pc



DESCRIPTION
<b>Français :</b> Sweat-shirt capuche zippé enfant
<b>English :</b> Kids' full zip hooded sweatshirt
<b>Nederlands :</b>
<b>Deutsch :</b> KAPUZEN JACKE FÜR KINDER
<b>Español :</b> SUDADERA CON CAPUCHA Y CREMALLERA PARA NIÑO
<b>Italiano :</b> FELPA BAMBINO FULL ZIP CON CAPPuccio
<b>Português :</b> Casaco sweatshirt de criança com capuz

COLORS	PANTONE SERIGRAPHIE
White	White
Black	Black
Navy	433C
Red	200C
Light royal blue	653C
Oxford grey	Based on Cool gray 7C

MEASUREMENT						
Description	6/8	8/10	10/12	12/14		
<b>H05 (K)*</b> Hauteur totale avec ceinture / Total height waist included	49,50	54,50	59,50	64,50		
<b>W05 (K)*</b> 1/2 largeur poitrine / 1/2 chest width	39	42	45	48		
<b>H15B (K)*</b> Longueur manche avec poignet / Sleeve length with cuff	45,50	49,50	53,50	57,50		

CARE LABEL

PACKING	
Box	20 pcs / box 6/8 => L:60cm W:40cm H:cm GW:kg NW:kg 8/10 => L:60cm W:40cm H:cm GW:kg NW:kg 10/12 => L:60cm W:40cm H:cm GW:kg NW:kg 12/14 => L:60cm W:40cm H:cm GW:kg NW:kg