

KARIBAN

REFERENCE : K453

SIZES : 6/8_8/10_10/12_12/14

COMPOSITION :

Main fabric : Brushed Combed Cotton / Polyester fleece 80/20 - 280 80%cotton / 20%polyester

Fabric 1 : Cotton single jersey (22/1) - 180 For hood lining, neckline property tape. 100%cotton

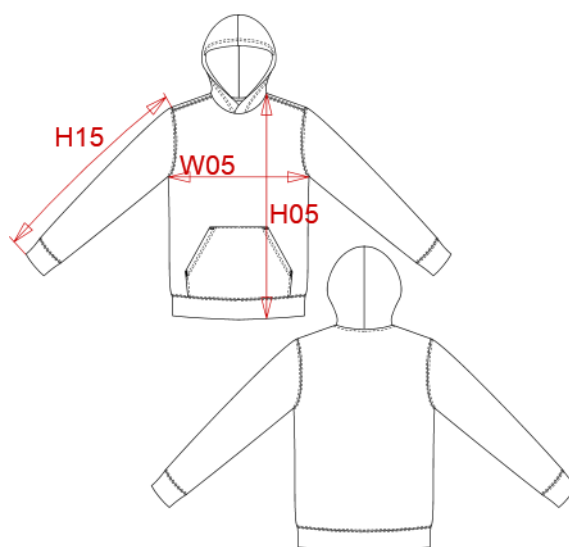
WEIGHT :

Main fabric : 280 gsm

Fabric 1 : 180 gsm

ARTICLE WEIGHT :

350 gr/pc



DESCRIPTION						COLORS		PANTONE SERIGRAPHIE			
Français : Sweat-shirt capuche contrastée enfant						Red / White		200C / White			
English : Kids' contrast hooded sweatshirt						Black / Red		Black / 200C			
Nederlands :						Light kelly green / White		7482C / White			
Deutsch : BICOLOR KAPUZEN SWEATSHIRT FÜR KINDER						White / Fine grey		White / 877C			
Español : SUDADERA CON CAPUCHA CONTRASTADA PARA NIÑO						Black / Yellow		Black / 1235C			
Italiano : FELPA BAMBINO CON CAPPuccio IN CONTRASTO						Light royal blue / Yellow		653C / 1235C			
Português : Sweatshirt de criança com capuz em contraste						Navy / Fine grey		433C / 877C			
MEASUREMENT						Oxford grey / Navy		Based on Cool gray 7C / 433C			
Description	6/8	8/10	10/12	12/14			Navy / Red		433C / 200C		
H05 Hauteur totale avec BC / Total height with rib	49,50	54,50	59,50	64,50			Black / Fine grey		Black / 877C		
W05 1/2 largeur poitrine / 1/2 chest width	39	42	45	48			Light royal blue / White		653C / White		
H15 Longueur manche avec BC / Sleeve length with rib	45,50	49,50	53,50	57,50			Fuchsia / Fine grey		7425C / 877C		
CARE LABEL						Sky blue / White		278C / White			
						Purple / Oxford grey		7447C / Based on Cool gray 7C			
PACKING											
Box	20 pcs / box										
	6/8 => L:60cm W:40cm H:24cm GW:7.1kg NW:6kg										
	8/10 => L:60cm W:40cm H:24cm GW:7.8kg NW:6.6kg										
	10/12 => L:60cm W:40cm H:34cm GW:8.7kg NW:7.3kg										
	12/14 => L:60cm W:40cm H:34cm GW:9.4kg NW:8kg										