

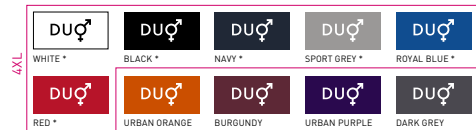
B&C #E190 LSL - TU 07T



REGULAR FIT

The modern tubular long-sleeve T-shirt with contemporary look and the unchanged 190g fabric quality by B&C for 20 years.

Your #190bestchoice #longsleeve #unisex



*COLOURS AVAILABLE IN 4XL

100% pre-shrunk ring-spun cotton

SPORT GREY: 85% PRE-SHRUNK RING-SPUN COTTON - 15% VISCOSE

Single Jersey

185 g/m²

S - M - L - XL - 2XL - 3XL - 4XL*

10 pcs/pack & 50 pcs/carton

* ONLY AVAILABLE IN WHITE, BLACK, NAVY, SPORT GREY, ROYAL BLUE AND RED

DUO
CONCEPT

with B&C #E190 LSL /w.

Want the same style/shape but in a lighter fabric?

TRY THE B&C #E150 LSL

Want the same style/shape but in short sleeve?

TRY THE B&C #E190

#Style / Fit

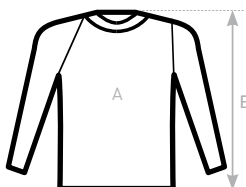
- Mainstream contemporary fit
- #allpurposes
- Tubular construction #movement
- Thin collar rib for modern appearance
- #uptodate
- Back necktape for a clean finish
- #comfort
- Same 10 colours for men & women
- #perfectduo
- 7 sizes - S to 4XL #fitsall
- Satin label #ultrasofttouch

#Quality / Handfeel

- Made of 100% cotton #protectmyskin
- #Oeko-Tex100
- Resistant fabric and soft handfeel
- #ring spun
- Unchanged proven B&C quality fabric
- #20years
- Heavy weight fabric 190 gsm
- #whatevertheweather

#Printability / Decoration

- Very smooth and even surface for bright and crisp printing results
- #details
- Tested and approved for all standard printing techniques applicable on cotton #beinspired
- Folded in box to ease the decoration process #makemylifeeasy



SIZES [CM]

| B&C #E190 LSL TU 07T | XS | S | M | L | XL | 2XL | 3XL | 4XL | 5XL |
|-------------------------------|----|----|----|----|----|-----|-----|-----|-----|
| A HALF CHEST | - | 50 | 53 | 56 | 59 | 62 | 65 | 70 | - |
| B BODY LENGTH FROM NECK POINT | - | 70 | 72 | 74 | 76 | 78 | 80 | 82 | - |

OEKO-TEX®
CONFIDENCE IN TEXTILES
STANDARD 100
1501003 Certexbel
Tested for harmful substances.
www.oeko-tex.com/standard100