



REGULAR FIT

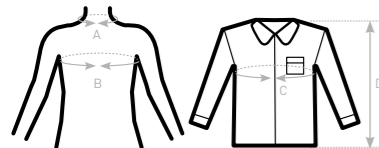
- Qualitative polycotton poplin with **Easy Care** finish
- Cut-away collar
- Cross stitched mother-of-pearl effect buttons
- 2-button adjustable cuffs
  - a. Angular cuffs & square-shaped gauntlets
  - b. Additional cufflink buttonholes
- Left chest pocket
- Back yoke with 2 overstitched side pleats
- Inside lap seams for perfect finish
- Horizontal last buttonhole
- Curved bottom hem



- 65% polyester - 35% **combed** cotton
  - Poplin
  - 115 g/m<sup>2</sup> **EASY CARE**
  - S > 4XL
  - 1 pc/pack & 10 pcs/carton
- 



SIZES [CM]



B&C SMART LSL /M. SM P61		US	S	M	L	XL	2XL	3XL	4XL	5XL	6XL
A COLLAR TO FIT	CM	37/38	39/40	41/42	43/44	45/46	47/48	49/50	-	-	-
	INS	14,5 / 15	15,5	16 / 16,5	17 / 17,5	18	18,5 / 19	19,5	-	-	-
B CHEST TO FIT	CM	92/97	97/102	102/107	107/112	112/117	117/122	122/127	-	-	-
	INS	36/38	38/40	40/42	42/44	44/46	46/48	48/50	-	-	-
C CHEST SIZE	CM	112	117	127	137	142	152	157	-	-	-
D CENTER BACK LENGTH	CM	80	81	83	85	86	88	89	-	-	-



DURABLE POLYCOTTON MEN'S LONG SLEEVED

EASY CARE POPLIN SHIRT **EASY CARE**

