

# B&C BLACK TIE SSL /MEN - SM P22

  
 THE SHIRT CULTURE  
 BE INSPIRED






  
 THE SHIRT CULTURE  
 BE INSPIRED



## MEDIUM FIT

- Stretch poplin
- Cut-away collar
- Cross stitched mother-of-pearl effect buttons
- Folded hem sleeves
- Short modern back yoke
- Inside lap seams for perfect finish
- Shorter length – can be worn untucked
- Curved bottom hem
- Darts at back panel

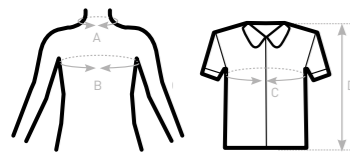
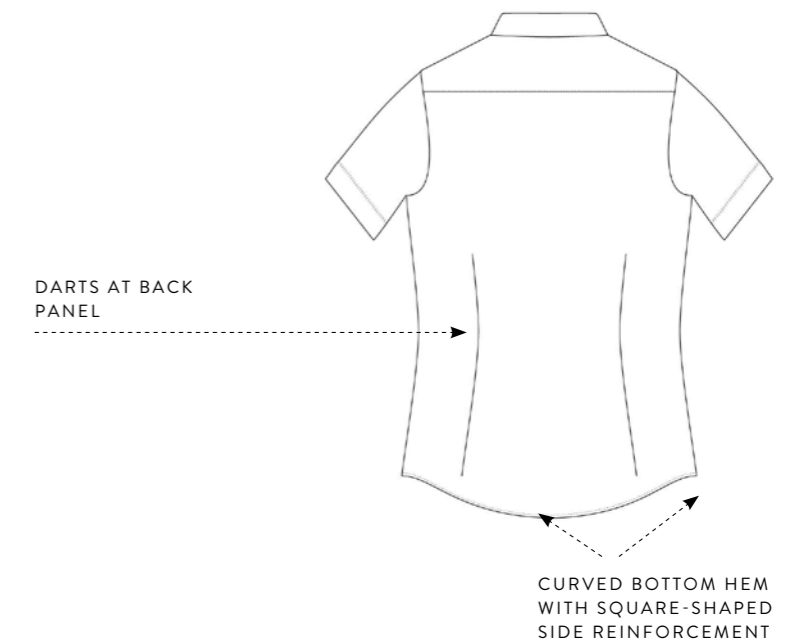
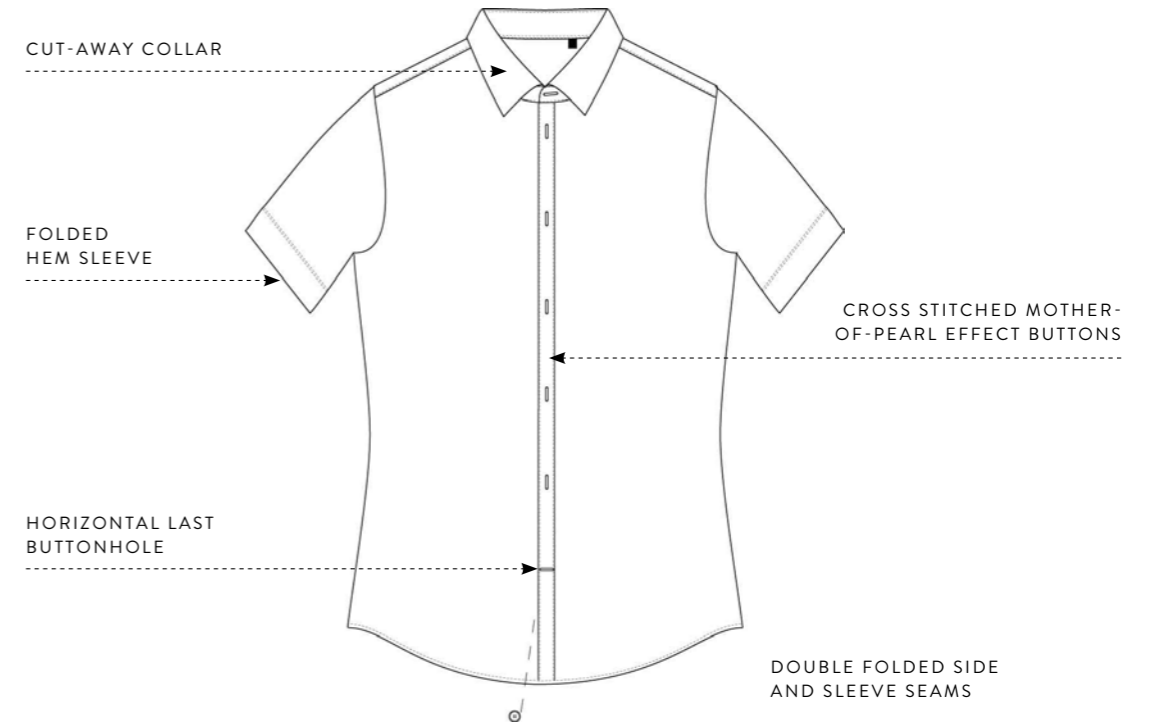


-  97% **combed** cotton - 3% elastane
-  Poplin
-  135 g/m<sup>2</sup> **STRETCH**
-  S > 4XL
-  1 pc/pack & 10 pcs/carton



**DUO**  
**CONCEPT**  
 with B&C Black Tie SSL /women

## STRETCH MEN'S SHORT SLEEVED EASY CARE POPLIN SHIRT



### SIZES [CM]

	US	S	M	L	XL	2XL	3XL	4XL	5XL	6XL
<b>B&amp;C BLACK TIE SSL /M. SM P22</b>	CM	37/38	39/40	41/42	43/44	45/46	47/48	49/50	-	-
A COLLAR TO FIT	INS	14,5 / 15	15,5	16 / 16,5	17 / 17,5	18	18,5 / 19	19,5	-	-
B CHEST TO FIT	CM	92 / 97	97 / 102	102 / 107	107 / 112	112 / 117	117 / 122	122 / 127	-	-
C CHEST SIZE	INS	36 / 38	38 / 40	40 / 42	42 / 44	44 / 46	46 / 48	48 / 50	-	-
D CENTER BACK LENGTH	CM	108	113	123	133	138	148	153	-	-
	CM	73	74	76	78	79	81	82	-	-

