



Le t-shirt ajusté pour femme

Coupe ajustée

XS XXL

180 GSM

Détails

- Manches montées
- Côtes 1x1 au col
- Bande de nuque intérieure dans la matière principale
- Surpiqûre à 2 aiguilles au poignet et à l'ourlet

Composition

Shell - Jersey simple grosse maille
 100% Cotton - Organic Carded - 180 GSM
 Panneaux lavés

Entretien

Wash similar colours together, no ironing on print,
 wash and iron inside out.



Pays d'origine

Weaving : Bangladesh
 Dyeing : Bangladesh
 Assembly : Bangladesh



Whites



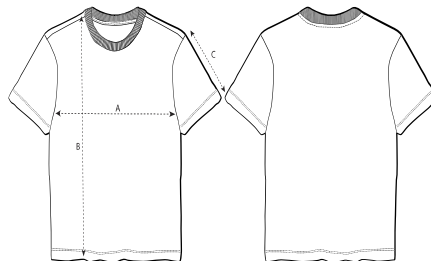
Colors



Essential Heathers



Guide des tailles



| Sizes | | XS | S | M | L | XL | XXL |
|-------|---------------|------|------|------|------|------|------|
| A | Half Chest | 39 | 42 | 45 | 48 | 51 | 55 |
| B | Body Length | 54.5 | 57.5 | 59.5 | 61.5 | 63.5 | 65.5 |
| C | Sleeve Length | 18 | 18.5 | 19 | 19.5 | 20 | 20.5 |

Emballage

| Sizes | | XS | S | M | L | XL | XXL |
|-------|------------|-----|-----|-----|-----|-----|-----|
| | Pieces/bag | 1 | 1 | 1 | 1 | 1 | 1 |
| | Pieces/box | 100 | 100 | 100 | 100 | 100 | 100 |