

KARIBAN

REFERENCE : KV2312

SIZES : XS_S_M_L_XL_XXL_3XL

COMPOSITION :

Main fabric : Peached and brushed Cotton / Polyester fleece
80/20 - 350 For body / hood / sleeves and pocket bags 80%
cotton / 20%polyester

Lining : Sherpa polyester - 280 For inside body / sleeves and
hood 100%polyester

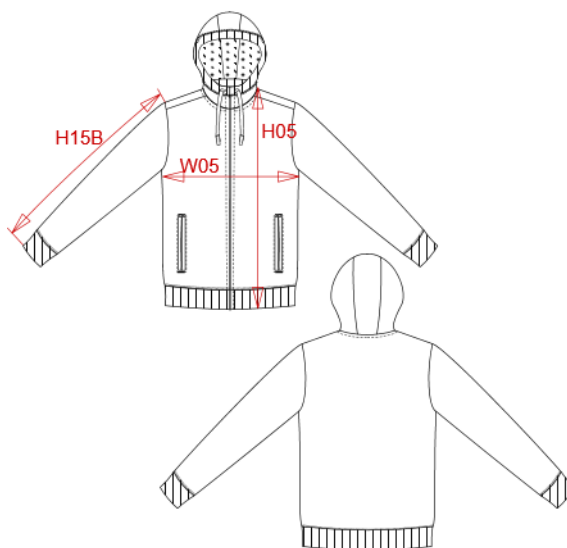
WEIGHT :

Main fabric : 350 gsm

Lining : 280 gsm

ARTICLE WEIGHT :

1480 gr/pc



DESCRIPTION
Français : Veste vintage molleton doublée sherpa
English : Vintage sherpa-lined fleece jacket
Nederlands : Vintage fleecejas met sherpavoering
Deutsch : Vintage Fleecejacke mit Sherpa-Futter
Español : Chaqueta vintage de felpa con forro de sherpa
Italiano : Giacca vintage in felpa foderata in sherpa
Português : Casaco vintage com forro em sherpa

COLORS	PANTONE SERIGRAPHIE
Slub grey heather	Based on 7539C
Night blue heather	Based on 432C

MEASUREMENT							
Description	XS	S	M	L	XL	XXL	3XL
H05 (M) Hauteur totale / Total height	67,50	69,50	71,50	73,50	75,50	77,50	79,50
W05 (M) 1/2 largeur poitrine à 1.5cm de l'emmanchure / 1/2 chest width at 1.5cm below armhole	49,50	52,50	55,50	58,50	61,50	64,50	67,50
H15B (M) Longueur manche avec poignet / Sleeve length with cuff	66	67	68	69	70	71	72

CARE LABEL

PACKING	
Box	5 pcs / box XS => L:60cm W:40cm H:30cm GW:7.7kg NW:6.2kg S => L:60cm W:40cm H:30cm GW:8kg NW:6.5kg M => L:60cm W:40cm H:30cm GW:8.3kg NW:6.8kg L => L:60cm W:40cm H:30cm GW:8.6kg NW:7.1kg XL => L:60cm W:40cm H:32cm GW:9kg NW:7.5kg XXL => L:60cm W:40cm H:32cm GW:9.5kg NW:8kg 3XL => L:60cm W:40cm H:32cm GW:9.9kg NW:8.4kg