

KARIBAN

REFERENCE : K536

SIZES : XS_S_M_L_XL_XXL_3XL_4XL

COMPOSITION :

Main fabric : Cotton / Polyester oxford 70/30 - 125 For white color 70%cotton / 30%polyester

Main fabric : Cotton / Polyester oxford 70/30 - 140 For colors 70%cotton / 30%polyester

WEIGHT :

Main fabric : 125 gsm

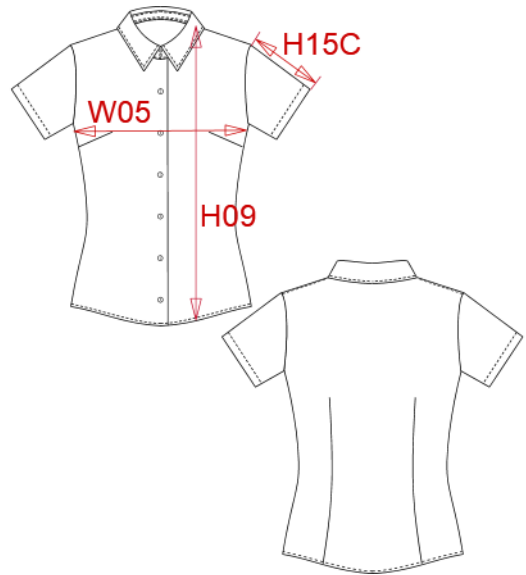
Main fabric : 140 gsm

TECHNICAL DETAIL :

Wrinkle free finish

ARTICLE WEIGHT :

200 gr/pc



DESCRIPTION
Français : Chemise femme manches courtes
English : Ladies short sleeve easy care oxford shirt
Nederlands : Dames blouse met korte mouwen
Deutsch : Pflegeleichte damen kurzarm oxford-bluse
Español : Camisa de manga corta para mujer
Italiano : Camicia oxford donna a maniche corte
Português : Camisa de senhora manga curta em oxford tratamento fácil

COLORS	PANTONE SERIGRAPHIE
White	White
Oxford silver	Based on 877C
Oxford blue	Based on 651C

MEASUREMENT									
Description	XS	S	M	L	XL	XXL	3XL	4XL	
W05 (M) 1/2 largeur poitrine à 1.5cm de l'emmanchure / 1/2 chest width at 1.5cm below armhole	44,50	47,50	50,50	53,50	56,50	59,50	62,50	65,50	
H09 (L) Hauteur totale devant / Front total height	63	65	67	69	71	73	75	77	
H15C (L) Longueur manche courte / Short sleeve length	19,90	20,60	21,30	22	22,70	23,40	24,10	24,80	

CARE LABEL

PACKING	
Box	12 pcs / box XS => L:52cm W:34cm H:20cm GW:3.60kg NW:2.30kg S => L:52cm W:34cm H:20cm GW:3.70kg NW:2.40kg M => L:52cm W:34cm H:20cm GW:3.80kg NW:2.50kg L => L:52cm W:34cm H:20cm GW:3.90kg NW:2.60kg XL => L:52cm W:34cm H:20cm GW:4.00kg NW:2.70kg XXL => L:52cm W:34cm H:20cm GW:4.10kg NW:2.70kg 3XL => L:52cm W:34cm H:20cm GW:4.20kg NW:2.80kg 4XL => L:52cm W:34cm H:20cm GW:4.30kg NW:2.90kg