

# KARIBAN

**REFERENCE :** K249

**SIZES :** 4/6\_6/8\_8/10\_10/12\_12/14

**COMPOSITION :**

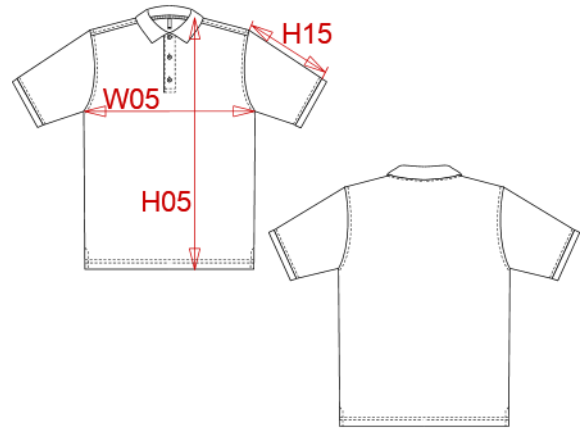
Main fabric : Combed cotton single pique - 220 100%cotton

**WEIGHT :**

Main fabric : 220 gsm

**ARTICLE WEIGHT :**

130 gr/pc



DESCRIPTION
<b>Français :</b> Polo manches courtes enfant
<b>English :</b> Kids' short sleeve polo shirt
<b>Nederlands :</b> Kinder polo korte mouwen
<b>Deutsch :</b> KINDER KURZARM POLO
<b>Español :</b> Polo de manga corta para niño
<b>Italiano :</b> POLO BAMBINO MANICHE CORTE
<b>Português :</b> Polo de criança manga curta

COLORS	PANTONE SERIGRAPHIE
White	White
Black	Black
Navy	433C
Red	200C
Sky blue	278C
Fuchsia	7425C

MEASUREMENT						
Description	4/6	6/8	8/10	10/12	12/14	
<b>H05 (K)*</b> Hauteur totale / Total height	41,25	47	52,50	57,50	62,50	
<b>W05 (K)*</b> 1/2 largeur poitrine à 1.5cm de l'emmanchure / 1/2 chest width at 1.5cm below armhole	31	34	37	40	43	
<b>H15I (K)*</b> Longueur manche avec bord côte / Sleeve length with rib	12,50	15	17,50	20	23,50	

CARE LABEL				

PACKING	
Box	25 pcs / box 4/6 => L:34cm W:24cm H:15cm GW:3.20kg NW:2.60kg 6/8-8/10 => L:38cm W:28cm H:15cm GW:4.40kg NW:3.70kg 10/12-12/14 => L:42cm W:32cm H:16cm GW:5.50kg NW:4.70kg