

KARIBAN

REFERENCE : K232

SIZES : S_M_L_XL_XXL_3XL

COMPOSITION :

Main fabric : Polyester / Combed Cotton pique 65/35 - 220
65%polyester / 35%cotton

Main fabric : Polyester / Combed Cotton pique 65/35 - 220 For
contrasted yokes 65%polyester / 35%cotton

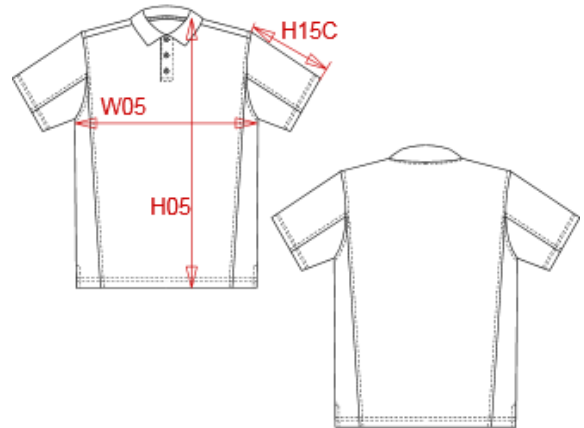
WEIGHT :

Main fabric : 220 gsm

Main fabric : 220 gsm

ARTICLE WEIGHT :

300 gr/pc



DESCRIPTION								COLORS		PANTONE SERIGRAPHIE	
Français : Polo bicolore								White / Red		White / 200C	
English : Bi-colour short sleeve polo shirt								Navy / White		433C / White	
Nederlands : Tweekleurige polo								White / Royal blue		White / 287C	
Deutsch : Zweifarbiges polohemd								Red / Black		200C / Black	
Español : Polo piqué bicolor								Black / Lime		Black / 367C	
Italiano : Polo bicolore								Navy / Sky blue		433C / 5425C	
Português : Polo pique bicolor								Black / Slate grey		Black / 424C	
MEASUREMENT								Black / Orange		Black / 1585C	
Description	S	M	L	XL	XXL	3XL		Light grey / Red		416C / 200C	
H05 (M) Hauteur totale / Total height	70	72	74	76	78	80		Dark grey / Orange		447C / 1585C	
W05 (M) 1/2 largeur poitrine / 1/2 chest width	50	53	56	59	62	65					
H15C (M) Longueur manche courte / Short sleeve length	22,25	23	23,75	24,50	25,25	26					
CARE LABEL											
PACKING											
Box	25 pcs / box S => L:60cm W:40cm H:15cm GW:7.65kg NW:6.15kg M => L:60cm W:40cm H:15cm GW:8kg NW:6.5kg L => L:60cm W:40cm H:15cm GW:8.55kg NW:7.05kg XL => L:60cm W:40cm H:15cm GW:8.95kg NW:7.45kg XXL => L:60cm W:40cm H:16cm GW:9.40kg NW:7.90kg 3XL => L:60cm W:40cm H:16cm GW:9.80kg NW:8.30kg										