

**GILDAN®**



**43800**

**Performance Adult Double Pique Polo**

**DETAILS**

**Weight**  
**Content**  
**Yarn Count**  
**Features**

190.0 G/SqM (White 185.0 G/SqM)  
100% Filament Polyester  
1/150/136  
Contoured welt collar  
Clean finished placket with reinforced bottom box  
3 colour-matched pearlized buttons  
Rolled forward topstitched shoulder  
Sideseamed with side vents  
Twin needle sleeve and bottom hems  
Eurofit-sleeker fit in shoulder and sleeve  
Mid weight Performance pique fabric  
Wicking properties  
Tear away label

**Country of Origin**

Honduras

**Sizes**

S-3XL

**Case Packs**

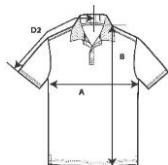
S - 3XL 36 PIECES

**Colours**

9

**SKU's**

54



**SPECIFICATIONS**

**Centimeters**

	<b>Tol-</b>	<b>Tol+</b>	<b>S</b>	<b>M</b>	<b>L</b>	<b>XL</b>	<b>2XL</b>	<b>3XL</b>
<b>Chest (A)</b>	2.540	2.540	50.000	53.000	56.000	59.000	62.000	66.000
<b>Length from HPS (B)</b>	2.540	2.540	69.000	72.000	75.000	76.000	82.000	85.000
<b>Sleeve length (Centre back) (D2)</b>	2.540	2.540	44.000	46.000	49.000	51.000	54.000	57.000

**Inches**

	<b>Tol-</b>	<b>Tol+</b>	<b>S</b>	<b>M</b>	<b>L</b>	<b>XL</b>	<b>2XL</b>	<b>3XL</b>
<b>Chest (A)</b>	1.000	1.000	19.750	21.000	22.000	23.250	24.500	26.000
<b>Length from HPS (B)</b>	1.000	1.000	27.000	28.250	29.500	31.000	32.250	33.500
<b>Sleeve length (Centre back) (D2)</b>	1.000	1.000	17.250	18.250	19.250	20.250	21.250	22.250

**COLOURS**

COLOURS	Code	Sizes
Black	036	S-3XL
Charcoal	042	S-3XL
Forest Green	033	S-3XL
Maroon	083	S-3XL
Navy	032	S-3XL
Red	040	S-3XL
Royal	051	S-3XL
Sapphire	026	S-3XL
White	030	S-3XL

**CHANGES**

Total Net Change 0 SKU's