

# B&C SUPERHOOD /MEN - JM 940

## HEAVY WEIGHT JACKET / DOWN JACKET



Heavyweight puffer bomber with fashionable contrasted inner lining

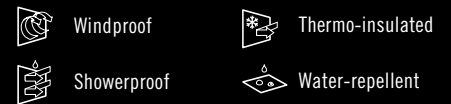
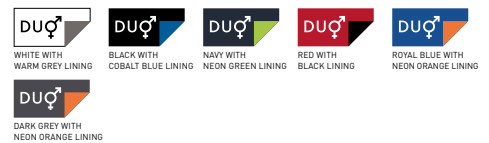
POLYESTER 300T TAFFETA

Outer layer: 100% polyester 300T taffeta

Inner layer: 100% polyester padded taffeta with feather touch padding

S - M - L - XL - 2XL - 3XL

1 pc/pack & 10 pcs/carton

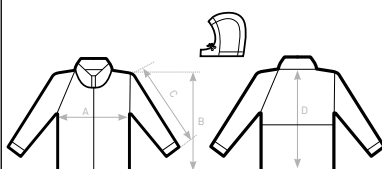


- Adjustable, removable padded hood
- Left chest and back (shoulder to middle back) panels with hidden zips for easy decoration access
- Standing collar, full length internal stormflap and cotton feel 2x2 rib on cuffs and hem for wind protection
- Bomber style, retail cut for a contemporary image
- 2 zipped hand pockets, 1 inner wallet pocket
- Fabric tested for the following decoration techniques: screen printing, heat transfer, sublimation (for white only) and embroidery



DUO  
CONCEPT

with B&C Superhood /w.



B&C SUPERHOOD /WOMEN JW 941

	XS	S	M	L	XL	2XL	3XL
A HALF CHEST	49	52	55	58	61	64	-
B BODY LENGTH FROM NECK POINT	61	63	65	67	69	71	-
C SLEEVE LENGTH	65,5	67	68,5	70	71,5	73	-
D CENTER BACK LENGTH	59	61	63	65	67	69	-

B&C  
COLLECTION

OUTER  
WEAR  
/UNIT