



MEN T-SHIRTS
STANLEY ADORER



STTM606

The men's light t-shirt

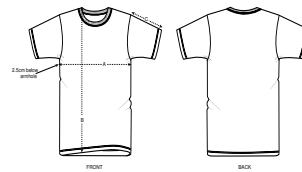
Single Jersey
100% Organic ring-spun combed cotton
140 GSM

- Set-in sleeve
- 1x1 rib binding at neck collar
- Sleeve hem and bottom hem with wide double needle topstitch

FITTED

S	M	L	XL	XXL
---	---	---	----	-----

Size guide



SIZES		S	M	L	XL	XXL
A	Half Chest	47	50	53	56	59
B	Body Length	70	72	74	76	78
C	Sleeve Length	19.5	19.5	20.5	20.5	21.5

Printing Specifications

Fits all kinds of print techniques. Please download our printing guide for details.

WHITES



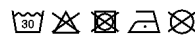
COLORS



ESSENTIAL
HEATHERS



Wash similar colours together, do not iron on print, wash and iron inside out.



STANLEY/STELLA