



WOMEN HOODIE SWEATSHIRTS  
**STELLA TRIGGER**



STSW148

**The iconic women's hoodie sweatshirt**

Terry Sweatshirt  
85% Organic ring-spun combed cotton, 15% Recycled polyester  
350 GSM

- Raglan sleeve
- Double layered hood in self fabric
- Round drawcords in matching body colour with metal tipping
- Stitched buttonhole eyelets
- Inside herringbone back neck tape
- Self fabric half moon at back neck
- Single needle topstitch at neckline
- 1x1 rib at sleeve hem and bottom hem with twin needle topstitch
- Kangaroo pocket with wide double topstitch
- CERTIFICATION/STOCK: Based on stock levels, majority is GOTS certified, but few quantities in heather colours are still OCS BLENDED. Please contact customer service for more information.

**COLORS**



**ESSENTIAL HEATHERS**



**SPECIAL HEATHERS**



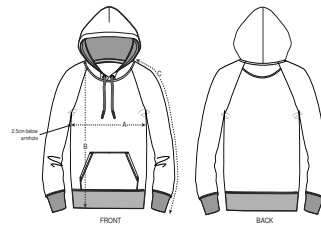
*\*Size available on limited number of colours*

*Please check our webshop for latest information*

**MEDIUM FIT**

XS	S	M	L	XL	XXL*
----	---	---	---	----	------

**Size guide**



SIZES		XS	S	M	L	XL	XXL
A	Half Chest	50.5	53	56	59	62	65
B	Body Length	59	61	63	65	66	67
C	Sleeve Length	69.8	71	72.5	73.8	75	76.2

**Combo options**

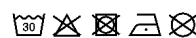


Stanley Flyer

**Printing Specifications**

Fits all kinds of print techniques. Please download our printing guide for details.

Wash similar colours together, do not iron on print, wash and iron inside out.



**STANLEY/STELLA**