



WOMEN CREW NECK SWEATSHIRTS
STELLA TRIPSTER



STSW146

The iconic women's crew neck sweatshirt

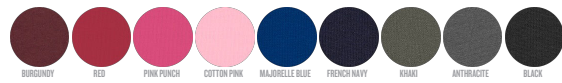
Terry Sweatshirt
85% Organic ring-spun combed cotton, 15% Recycled polyester
350 GSM

- Raglan sleeve
- 1x1 rib at neck collar, sleeve hem and bottom hem
- Inside herringbone back neck tape
- Self fabric half moon at back neck
- Single needle topstitch at neck collar
- Sleeve hem and bottom hem with twin needle topstitch

WHITES



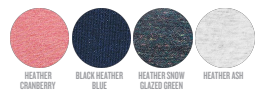
COLORS



ESSENTIAL HEATHERS



SPECIAL HEATHERS



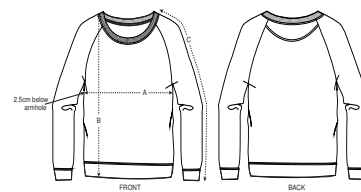
**Size available on limited number of colours*

Please check our webshop for latest information

MEDIUM FIT

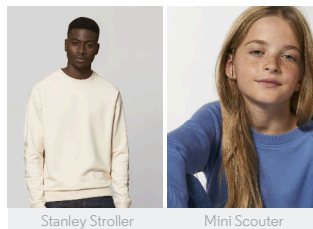
XS	S	M	L	XL	XXL*
----	---	---	---	----	------

Size guide



SIZES		XS	S	M	L	XL	XXL
A	Half Chest	47.5	50	53	56	59	62
B	Body Length	61	63	65	67	68	69
C	Sleeve Length	69	71	72.5	73.8	75	76.2

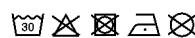
Combo options



Printing Specifications

Fits all kinds of print techniques. Please download our printing guide for details.

Wash similar colours together, do not iron on print, wash and iron inside out.



STANLEY/STELLA