



COLORS



ESSENTIAL HEATHERS



MEN CREW NECK SWEATSHIRTS  
**STANLEY TRUCKER**



STSM611

**The men's quarter zip sweatshirt**

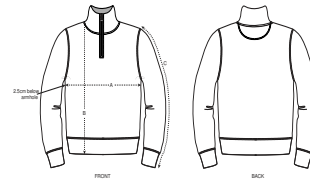
Brushed Sweatshirt  
85% Organic ring-spun combed cotton, 15% Recycled polyester  
300 GSM

- Set-in sleeve
- Neck collar in self fabric
- Inside herringbone back neck tape
- Self fabric half moon at back neck
- Quarter zip at center front with inside facing
- 1x1 rib at sleeve hem and bottom hem
- Armhole, sleeve hem and bottom hem with twin needle topstitch

FITTED

|    |   |   |   |    |     |
|----|---|---|---|----|-----|
| XS | S | M | L | XL | XXL |
|----|---|---|---|----|-----|

Size guide



| SIZES |               | XS | S    | M  | L    | XL | XXL  |
|-------|---------------|----|------|----|------|----|------|
| A     | Half Chest    | 48 | 50.5 | 53 | 56   | 59 | 62   |
| B     | Body Length   | 68 | 70   | 72 | 74   | 76 | 78   |
| C     | Sleeve Length | 63 | 64.5 | 66 | 67.5 | 69 | 70.5 |

Combo options

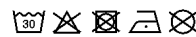


Stella Tracker

Printing Specifications

Fits all kinds of print techniques. Please download our printing guide for details.

Wash similar colours together, do not iron on print, wash and iron inside out. Close zip before washing.



**STANLEY/STELLA**