



The women's polo dress

Medium Fit

XS XXL

230 GSM

Details

- Set-in sleeve
- Flat knit rib on collar
- Inside heavy single jersey back neck tape
- Front placket with 2 buttons in matching body colour
- Side panels in self fabric
- Single needle topstitch at shoulder seams
- Sleeve Hem and Bottom hem with narrow double needle topstitch

Composition

Shell - Piqué
 100% Cotton - Organic Ring Spun Combed - 230 GSM
 Fabric washed

Care

Wash similar colours together, no ironing on print,
 wash and iron inside out.



Country of origin

Weaving : Bangladesh
 Dyeing : Bangladesh
 Assembly : Bangladesh



Whites



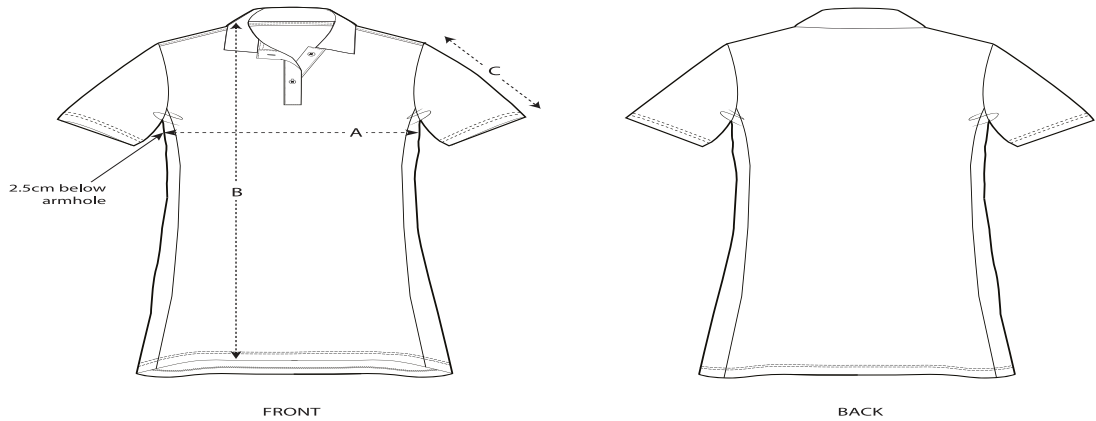
Colors



Essential Heathers



Size Guide



Sizes		XS	S	M	L	XL	XXL
A	Half Chest	42	44.5	47.5	50.5	53.5	56.5
B	Body Length	88.5	90.5	92.5	95.5	96.5	96.5
C	Sleeve Length	24.5	24.5	25.5	25.5	26.5	26.5

Packing

Sizes		XS	S	M	L	XL	XXL
	Pieces/bag	5	5	5	5	5	5
	Pieces/box	50	50	50	50	50	50