



WOMEN JOGGING PANTS
STELLA TRACES



STBW129

The women's jogger pants

Terry Sweatshirt
85% Organic ring-spun combed cotton, 15% Polyester
300 GSM

- Self fabric waistband
- Round drawcords in matching body colour with metal tipping
- Metal eyelets
- Single jersey on inside waistband and inside pockets (in contrast for some colours)
- Side panels in self fabric
- Patch pocket at back
- 1x1 rib at bottom leg hem
- Flatlock topstitch on all seams
- CERTIFICATION/STOCK: Based on stock levels, some quantities may be GOTS

WHITES



COLORS



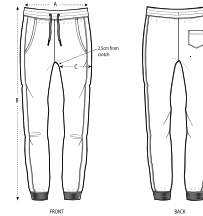
ESSENTIAL HEATHERS



FITTED

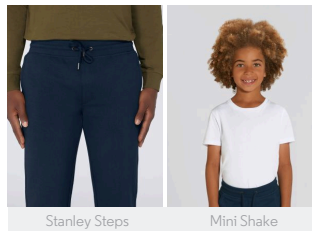
XS	S	M	L	XL
----	---	---	---	----

Size guide



SIZES		XS	S	M	L	XL
A	Waist	38	40	42.5	45	47.5
B	Leg Length	96	98	100	101	102
C	Tight	25.8	26.5	27.5	29	30.5

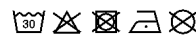
Combo options



Printing Specifications

Fits all kinds of print techniques. Please download our printing guide for details.

Wash similar colours together, do not iron on print, wash and iron inside out.



STANLEY/STELLA