



NS716
Men's Terry280 shorts - 280gsm



Made in Portugal 100% organic cotton Ringspun combed cotton French Terry inner Garment dyed as a whole after assembly: colours vary between products Two side pockets Elasticated waistband with flat drawstring, eyelets and tips made from recycled metal Piped pockets on the front and back

 280 g/m² 

Sizes

 S - M - L - XL - XXL - 3XL - 4XL

More information

Logistic

 1  20

Country of origin

 PT - Portugal

Customs code

 61046200

Washing instructions



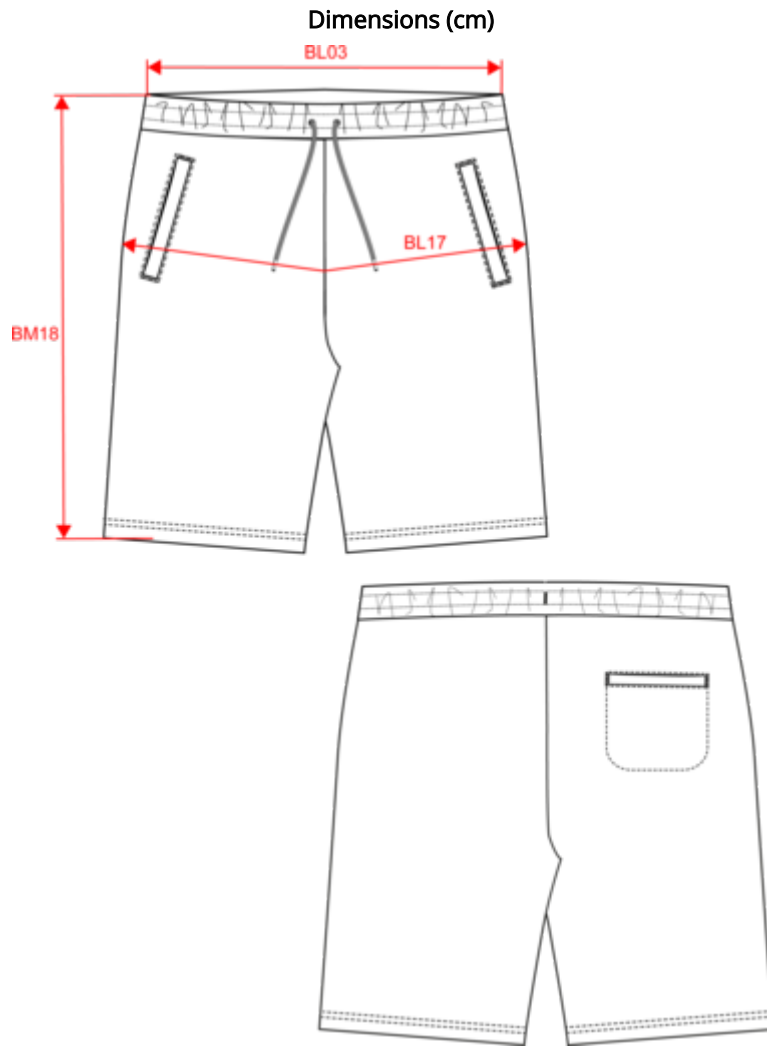
Colours

 Washed black
 Washed Ivory
 Washed Jade Green
 Washed Navy Blue
 Washed Organic Khaki
 Washed Pomelo

Certifications



NS716
Men's Terry280 shorts - 280gsm



Measurements in cm	S	M	L	XL	XXL	3XL	4XL
BL03 - 1/2 elasticated waist width relaxed (front over back)	36.00	38.00	40.00	43.00	46.00	49.00	52.00
BL17 - 1/2 hip width (measured parallel to waistband)	48.00	51.00	54.00	57.00	60.00	63.00	66.00
BM18 - Side length (waistband included)	45.50	46.25	47.00	47.75	48.50	49.25	50.00

NS716

Men's Terry280 shorts - 280gsm

Colours information



Washed black
 RVB : 43,39,42
 Pantone C : Neutral Black
 Pantone TCX : 19-4008TCX



Washed Ivory
 RVB : 243,232,220
 Pantone C : 7534C
 Pantone TCX : 11-4202TCX



Washed Jade Green
 RVB : 151,173,165
 Pantone C : 5635C
 Pantone TCX : 16-5304TCX



Washed Navy Blue
 RVB : 54,61,75
 Pantone C : 432C
 Pantone TCX : 19-4023TCX



Washed Organic Khaki
 RVB : 85,89,77
 Pantone C : 418C
 Pantone TCX : 19-0312TCX



Washed Pomelo
 RVB : 174,98,83
 Pantone C : 7522C
 Pantone TCX : 17-1532TCX

Logistic



Sizes	Width (cm)	Height (cm)	Length (cm)	Net weight (kg)	Gross weight (kg)	Pieces/Box	Pieces/Bundle
S	40.00	30.00	60.00	4.84000	6.24000	20	1
M	40.00	30.00	60.00	5.12000	6.52000	20	1
L	40.00	30.00	60.00	5.49000	6.89000	20	1
XL	40.00	30.00	60.00	5.84000	7.24000	20	1
XXL	40.00	30.00	60.00	6.16000	7.56000	20	1
3XL	40.00	30.00	60.00	6.50000	7.90000	20	1
4XL	40.00	30.00	60.00	6.70000	8.10000	20	1