




Made in Portugal 100% organic cotton Ringspun combed cotton French Terry inner Slightly flared cut Garment dyed as a whole after assembly: colours vary between products Two side pockets Elasticated waistband with flat drawstring, eyelets and tips made from recycled metal

 280 g/m² 

Sizes

 XS - S - M - L - XL - XXL

More information

Logistic

 1  20

Country of origin

 PT - Portugal

Customs code

 61046200

Washing instructions



Colours

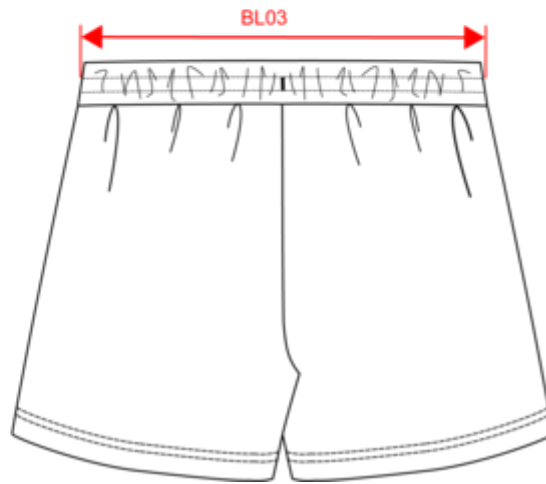
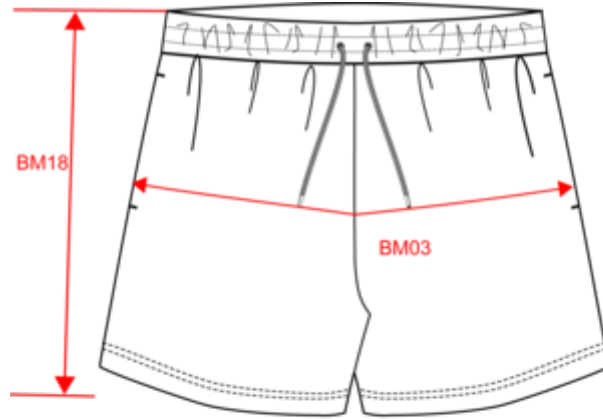
 Washed black
 Washed Ivory
 Washed Jade Green
 Washed Navy Blue
 Washed Organic Khaki
 Washed Parma
 Washed Pomelo

Certifications



NS715
Ladies' Terry280 shorts - 280gsm

Dimensions (cm)



Measurements in cm	XS	S	M	L	XL	XXL
BL03 - 1/2 elasticated waist width relaxed (front over back)	33.00	35.00	37.00	40.00	43.00	46.00
BM03 - Front crotch seam length (waistband included)	30.00	30.75	31.50	32.25	33.00	33.75
BM18 - Side length (waistband included)	28.50	29.25	30.00	30.75	31.50	32.25

NS715

Ladies' Terry280 shorts - 280gsm

Colours information



Washed black
 RVB : 43,39,42
 Pantone C : Neutral Black
 Pantone TCX : 19-4008TCX



Washed Ivory
 RVB : 243,232,220
 Pantone C : 7534C
 Pantone TCX : 11-4202TCX



Washed Jade Green
 RVB : 151,173,165
 Pantone C : 5635C
 Pantone TCX : 16-5304TCX



Washed Navy Blue
 RVB : 54,61,75
 Pantone C : 432C
 Pantone TCX : 19-4023TCX



Washed Organic Khaki
 RVB : 85,89,77
 Pantone C : 418C
 Pantone TCX : 19-0312TCX



Washed Parma
 RVB : 184,182,207
 Pantone C : 5305C
 Pantone TCX : 14-3911TCX



Washed Pomelo
 RVB : 174,98,83
 Pantone C : 7522C
 Pantone TCX : 17-1532TCX

Logistic



1



20

Sizes	Width (cm)	Height (cm)	Length (cm)	Net weight (kg)	Gross weight (kg)	Pieces/Box	Pieces/Bundle
XS	40.00	15.00	60.00	0.00000	4.50000	20	1
S	40.00	15.00	60.00	0.00000	4.66000	20	1
M	40.00	15.00	60.00	0.00000	4.98000	20	1
L	40.00	15.00	60.00	0.00000	5.10000	20	1
XL	40.00	15.00	60.00	0.00000	5.32000	20	1
XXL	40.00	15.00	60.00	0.00000	5.48000	20	1