




**About**

- No label: 100% customisable for your brand.
- Enzyme-washed for a perfectly clear printing surface.
- 3-yarn LSF (Low Shrinkage Fleece) design: hard-wearing and wash-resistant.

85% organic cotton and 15% post-consumer recycled polyester. Combed cotton. 3-ply brushed fleece LSF (Low Shrinkage Fleece: pre-shrunk fleece). Enzyme-washed. Elasticated waistband in 1x1 ribbing with round drawstring made from organic cotton. Buttonhole eyelet for waistband drawstring. Side pockets and one back pocket with piping. 1x1 rib leg hem. No brand label, only a tear-off size tag for easy decoration.

 300 g/m<sup>2</sup> 

**Sizes**

 4/6 ans - 6/8 ans - 8/10 ans - 10/12 ans - 12/14 ans

**More information**

**Logistic**

 1  20

**Country of origin**

 BD - Bangladesh

**Customs code**

 61046200

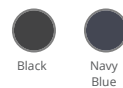
**Washing instructions**



**Certifications**

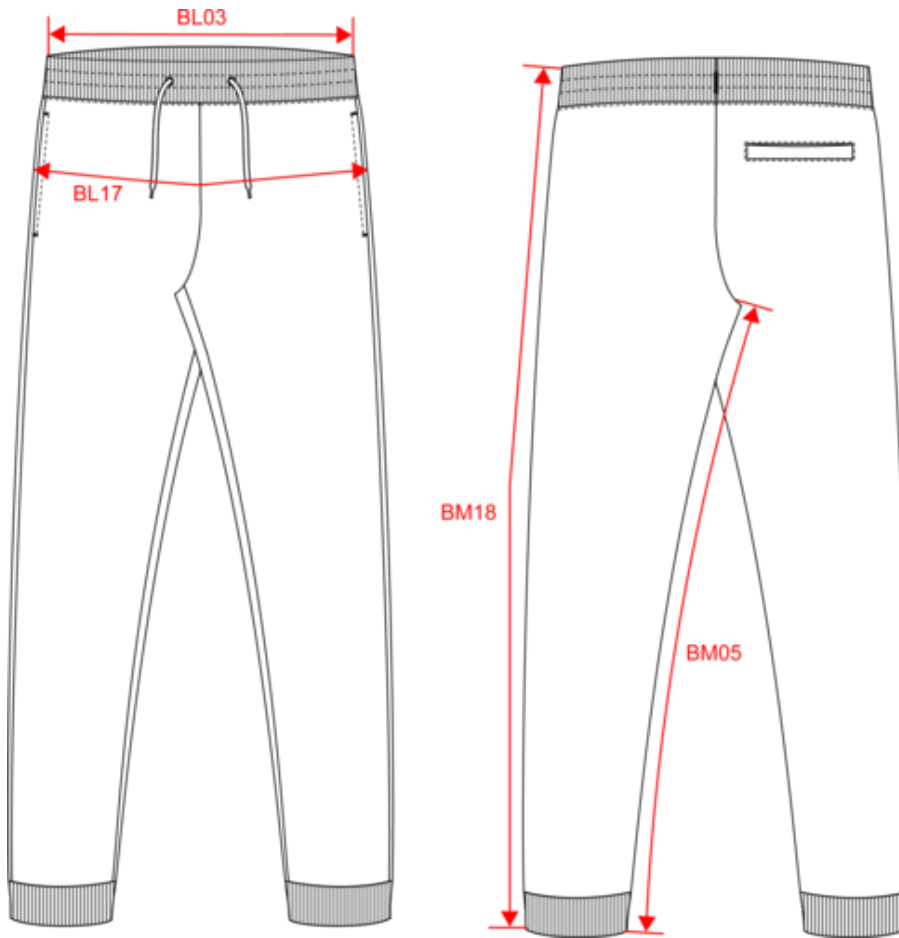


**Colours**



NS702  
Kids' jogging trousers - 300g

Dimensions (cm)



| Measurements in cm   | 4/6   | 6/8   | 8/10  | 10/12 | 12/14 |
|--|-------|-------|-------|-------|-------|
| BL03 - 1/2 elasticated waist width relaxed (front over back) | 26.00 | 27.25 | 29.00 | 31.00 | 33.00 |
| BL17 - 1/2 hip width (measured parallel to waistband)        | 34.50 | 37.00 | 40.00 | 43.00 | 46.00 |
| BM05 - Inseam length   | 45.50 | 51.50 | 57.50 | 63.50 | 69.50 |
| BM18 - Side length (waistband included)                      | 63.50 | 72.00 | 80.00 | 88.00 | 96.00 |

**NS702**  
Kids' jogging trousers - 300g

**Colours information**

**Black**  
RVB : 35,35,37  
Pantone C : Black  
Pantone TCX : 19-4004TCX

**Navy Blue**  
RVB : 41,45,57  
Pantone C : 433C  
Pantone TCX : 19-4010TCX

**Logistic**



| Sizes     | Width (cm) | Height (cm) | Length (cm) | Net weight (kg) | Gross weight (kg) | Pieces/Box | Pieces/Bundle |
|-----------|------------|-------------|-------------|-----------------|-------------------|------------|---------------|
| 4/6 ans   | 40.00      | 20.00       | 60.00       | 4.40000         | 5.70000           | 20         | 1             |
| 6/8 ans   | 40.00      | 20.00       | 60.00       | 5.10000         | 6.40000           | 20         | 1             |
| 8/10 ans  | 40.00      | 20.00       | 60.00       | 5.90000         | 7.20000           | 20         | 1             |
| 10/12 ans | 40.00      | 25.00       | 60.00       | 6.70000         | 8.10000           | 20         | 1             |
| 12/14 ans | 40.00      | 25.00       | 60.00       | 7.60000         | 9.00000           | 20         | 1             |