



100% organic cotton Combed cotton. Straight fit. Classic placket with pearlised buttons Casual "round pleat" back yoke "Doghouse" pointed sleeve placket with buttons Garment dyed after assembly: colours may vary slightly

135 g/m<sup>2</sup>

Sizes

XS - S - M - L - XL - XXL

More information

Logistic

1 25

Country of origin

BD - Bangladesh

Customs code

62063000

Washing instructions



Colours

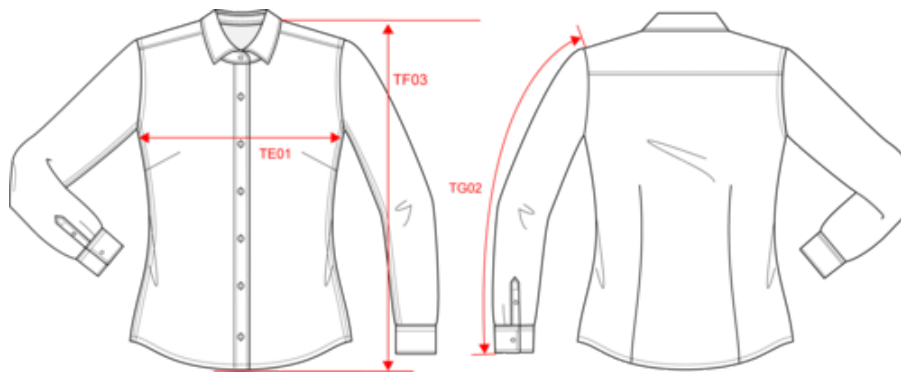
Washed Cool Blue  
 Washed Jade Green  
 Washed Linen  
 Washed Navy  
 Washed Pale Khaki  
 Washed white

Certifications



**NS503**  
Ladies' washed shirt

Dimensions (cm)



Measurements in cm	XS	S	M	L	XL	XXL
TE01 - 1/2 chest width at 1.5cm below armhole	44.50	47.50	50.50	53.50	56.50	59.50
TF03 - Front total height from HSP	68.00	70.00	72.00	74.00	76.00	78.00
TG02 - Long sleeve length	60.00	61.00	62.00	63.00	64.00	65.00

**NS503**  
Ladies' washed shirt

Colours information



**Washed Cool Blue**

RVB : 103,128,150  
Pantone C : 7544C  
Pantone TCX : 17-4020TCX



**Washed Jade Green**

RVB : 151,173,165  
Pantone C : 5635C  
Pantone TCX : 16-5304TCX



**Washed Linen**

RVB : 161,146,129  
Pantone C : 7536C  
Pantone TCX : 17-1312TCX



**Washed Navy**

RVB : 46,54,68  
Pantone C : 432C  
Pantone TCX : 19-4022TCX



**Washed Pale Khaki**

RVB : 113,116,108  
Pantone C : 416C  
Pantone TCX : 18-5806TCX



**Washed white**

RVB : 240,238,248  
Pantone C : Cool Gray 1C  
Pantone TCX : 13-4105TCX

Logistic



1



25

Sizes	Width (cm)	Height (cm)	Length (cm)	Net weight (kg)	Gross weight (kg)	Pieces/Box	Pieces/Bundle
XS	0.00	0.00	0.00	0.00000	0.00000	25	0
S	0.00	0.00	0.00	0.00000	0.00000	25	0
M	0.00	0.00	0.00	0.00000	0.00000	25	0
L	0.00	0.00	0.00	0.00000	0.00000	25	0
XL	0.00	0.00	0.00	0.00000	0.00000	25	0
XXL	0.00	0.00	0.00	0.00000	0.00000	25	0