

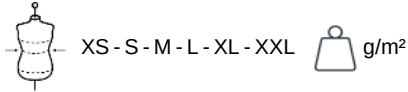
KARIBAN

K6111

Ladies' lightweight hooded padded jacket

- Practical, warm and super light.
- Hard-wearing, supple and easy-care material.
- Folds up into storage bag.

100% polyamide (Marl Silver 100% polyester, Marl dark grey: 70% polyamide/30% polyester). Polyester lining. Warm and ultra-lightweight. Folds up into storage bag. 2 front zipped pockets. Inside : Convoy Grey for Black, Red, Marl Dark Grey and Marl Silver ; Navy for Light Royal Blue and Navy ; White for White. Certified STANDARD 100 by OEKO-TEX® N° CQ 1007/8, IFTH. Average weight size M : 448g.

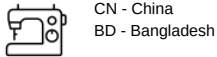


More information

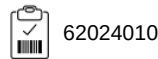
Logistic



Country of origin



Customs code



Washing instructions



Also available in version



K6110 K6112

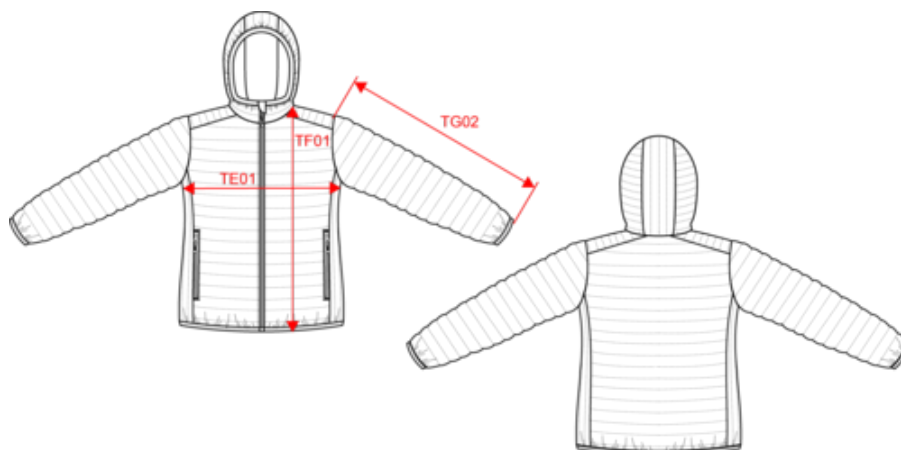


KARIBAN

K6111

Ladies' lightweight hooded padded jacket

Dimensions (cm)



Measurements in cm	XS	S	M	L	XL	XXL
TE01 - 1/2 chest width at 1.5cm below armhole	46.00	49.00	52.00	55.00	58.00	61.00
TF04 - Back total height from HSP	60.00	62.00	64.00	66.00	68.00	70.00
TG02 - Long sleeve length	64.00	65.00	66.00	67.00	68.00	69.00

KARIBAN

K6111

Ladies' lightweight hooded padded jacket

Colours information

 Black RVB : 35,35,37 Pantone C : Black Pantone TCX : 19-4004TCX	 Light Royal Blue RVB : 53,95,151 Pantone C : 653C Pantone TCX : 18-4041TCX	 Marl Dark Grey RVB : Pantone C : Based on 446C Pantone TCX : 19-3907TCX	 Marl Silver RVB : Pantone C : Based on 877C Pantone TCX : 17-0000TCX	 Navy RVB : 41,46,56 Pantone C : 433C Pantone TCX : 19-4012TCX
 Red RVB : 195,32,54 Pantone C : 200C Pantone TCX : 19-1664TCX	 White RVB : 236,236,252 Pantone C : White Pantone TCX : 11-0601TCX			

Logistic  1  15

Sizes	Width (cm)	Height (cm)	Length (cm)	Net weight (kg)	Gross weight (kg)	Pieces/Box	Pieces/Bundle
XS	40.00	35.00	60.00	5.20000	6.20000	15	1
S	40.00	35.00	60.00	5.40000	6.40000	15	1
M	40.00	35.00	60.00	5.80000	6.80000	15	1
L	40.00	35.00	60.00	5.90000	6.90000	15	1
XL	40.00	40.00	60.00	6.10000	7.10000	15	1
XXL	40.00	40.00	60.00	6.30000	7.30000	15	1