

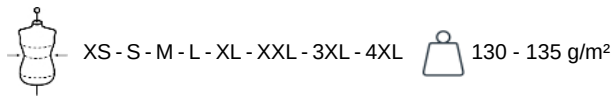
KARIBAN

K536

Ladies' short-sleeved Oxford shirt

- The classic Oxford shirt for a corporate style.
- Easy to clean thanks to easy-care treatment.
- Takes its place as a workwear wardrobe essential.

70% Oxford cotton/30% polyester. Easy-care fabric. Soft collar. Matching buttons. 2-button collar band. Front and back darts for ultimate comfort. 2 spare buttons. Shaped hem. Certified STANDARD 100 by OEKO-TEX® N° CQ 1007/7, IFTH.

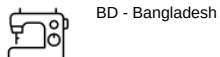


More information

Logistic



Country of origin



Customs code



Washing instructions



Also available in version



K535

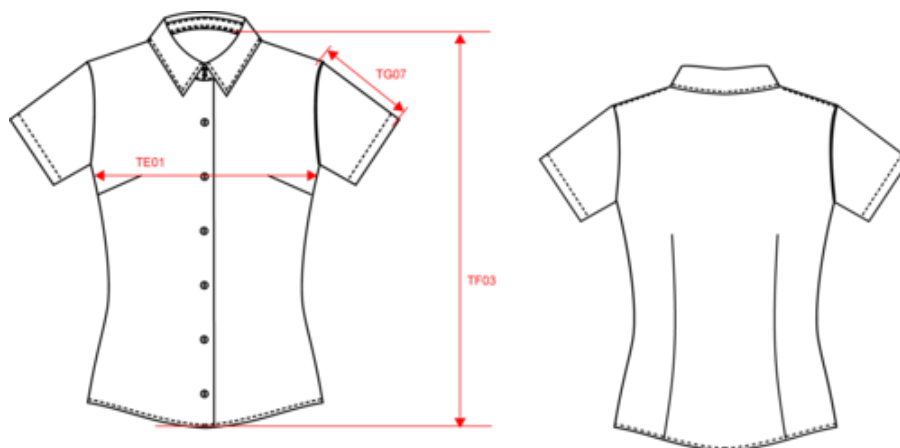


KARIBAN

K536

Ladies' short-sleeved Oxford shirt

Dimensions (cm)



Measurements in cm	XS	S	M	L	XL	XXL	3XL	4XL
TE01 - 1/2 chest width at 1.5cm below armhole	44.50	47.50	50.50	53.50	56.50	59.50	62.50	65.50
TF03 - Front total height from HSP	63.00	65.00	67.00	69.00	71.00	73.00	75.00	77.00
TG07 - Short sleeve length	19.80	20.55	21.30	22.05	22.80	23.55	24.30	25.05

KARIBAN

K536

Ladies' short-sleeved Oxford shirt

Colours information



Black
RVB : 35,35,37
Pantone C : Black
Pantone TCX : 19-4004TCX



Oxford Blue
RVB :
Pantone C : Based on 651C
Pantone TCX : Based on 15-4030TCX



Oxford Cobalt Blue
RVB :
Pantone C :
Pantone TCX :



Oxford Pale Pink
RVB :
Pantone C :
Pantone TCX :



Oxford Shadow Navy
RVB :
Pantone C :
Pantone TCX :



Oxford Silver
RVB :
Pantone C : Based on 877C
Pantone TCX : Based on 17-3911TCX



Oxford Zinc
RVB :
Pantone C :
Pantone TCX :



White
RVB : 236,236,252
Pantone C : White
Pantone TCX : 11-0601TCX

Logistic



1



12

Sizes	Width (cm)	Height (cm)	Length (cm)	Net weight (kg)	Gross weight (kg)	Pieces/Box	Pieces/Bundle
XS	0.00	0.00	0.00	0.00000	0.00000	12	0
S	0.00	0.00	0.00	0.00000	0.00000	12	0
M	0.00	0.00	0.00	0.00000	0.00000	12	0
L	0.00	0.00	0.00	0.00000	0.00000	12	0
XL	0.00	0.00	0.00	0.00000	0.00000	12	0
XXL	0.00	0.00	0.00	0.00000	0.00000	12	0
3XL	0.00	0.00	0.00	0.00000	0.00000	12	0
4XL	0.00	0.00	0.00	0.00000	0.00000	12	0