

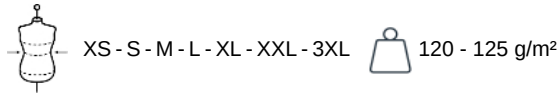
# KARIBAN

K513

## Men's long-sleeved cotton poplin shirt

- Silky and supple poplin fabric.
- Slim fit so it hangs perfectly.
- Easy to clean thanks to easy-care treatment.

100% cotton poplin. Easy-care treatment. Fitted style. Matching buttons. Double back yoke. Adjustable cuffs. Certifié STANDARD 100 by OEKO-TEX® N° CQ1007/7, IFTH.

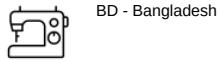


### More information

#### Logistic



#### Country of origin



#### Customs code



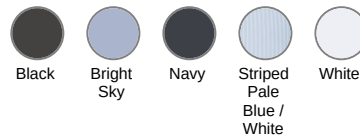
#### Washing instructions



### Also available in version



K510

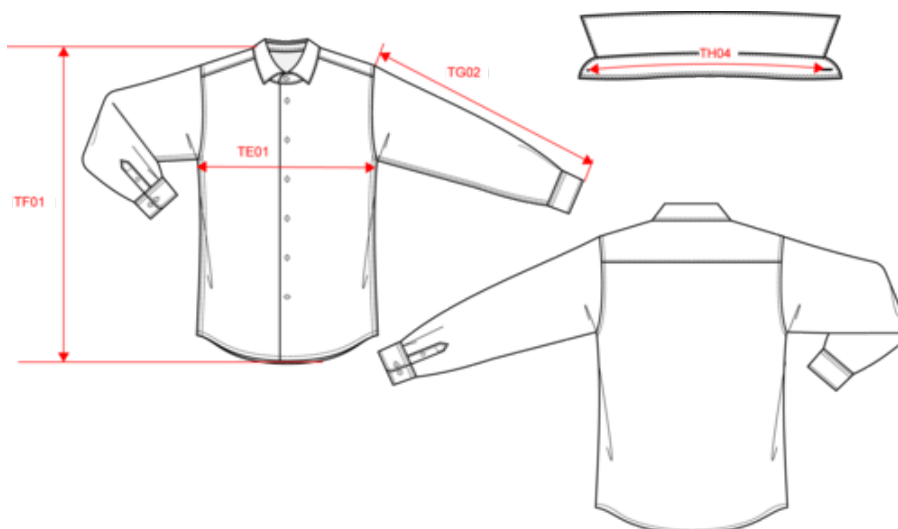


# KARIBAN

K513

## Men's long-sleeved cotton poplin shirt

### Dimensions (cm)



Measurements in cm	XS	S	M	L	XL	XXL	3XL
TE01 - 1/2 chest width at 1.5cm below armhole	48.00	51.00	54.00	57.00	60.00	63.00	66.00
TF01 - Total height from HSP	72.50	74.50	76.50	78.50	80.50	82.50	84.50
TG02 - Long sleeve length	63.00	64.00	65.00	66.00	67.00	68.00	69.00
TH04 - Neckline length on collar from middle to middle	39.40	40.60	41.80	43.00	44.20	45.40	46.60

# KARIBAN

K513

## Men's long-sleeved cotton poplin shirt

### Colours information



**Black**  
RVB : 35,35,37  
Pantone C : Black  
Pantone TCX : 19-4004TCX



**Bright Sky**  
RVB : 152,173,209  
Pantone C : 535C  
Pantone TCX : 15-4030TCX



**Navy**  
RVB : 41,46,56  
Pantone C : 433C  
Pantone TCX : 19-4012TCX



**Striped Pale Blue**  
RVB :  
Pantone C : 277C / White  
Pantone TCX : 14-4112TCX / 11-0601TCX

**White**

RVB : 236,236,252  
Pantone C : White  
Pantone TCX : 11-0601TCX



**White**  
RVB : 236,236,252  
Pantone C : White  
Pantone TCX : 11-0601TCX

### Logistic



1



12

Sizes	Width (cm)	Height (cm)	Length (cm)	Net weight (kg)	Gross weight (kg)	Pieces/Box	Pieces/Bundle
XS	40.00	20.00	60.00	3.35000	5.15000	12	0
S	40.00	20.00	60.00	3.50000	5.30000	12	0
M	40.00	20.00	60.00	3.65000	5.45000	12	0
L	40.00	20.00	60.00	3.85000	5.65000	12	0
XL	40.00	20.00	60.00	3.95000	5.75000	12	0
XXL	40.00	20.00	60.00	4.10000	5.90000	12	0
3XL	40.00	20.00	60.00	4.30000	6.10000	12	0