

KARIBAN

REFERENCE : K236

SIZES : XS_S_M_L_XL_XXL

COMPOSITION :

Main fabric : Cotton / Elastane Pique 220 95%cotton / 5%elastane

WEIGHT :

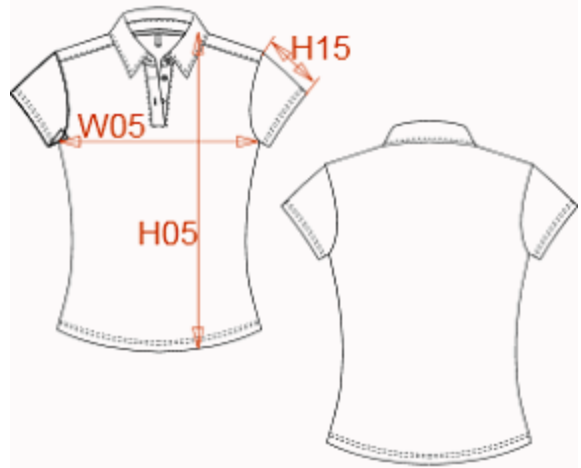
Main fabric : 220 gsm

FABRIC CONSTRUCTION AND FINISHING :

Pique

ARTICLE WEIGHT :

150 gr/pc



DESCRIPTION	COLORS	PANTONE SERIGRAPHIE
Français : Polo femme manches courtes English : Short sleeve polo Nederlands : Damespolo met korte mouwen Deutsch : Damen kurzarm-polohemd Español : Polo de manga corta para mujer Italiano : Polo donna maniche corte Português : Polo pique de senhora manga curta	White	White
	Black	Black

MEASUREMENT								
Description	Tol +/-	Tol +/- Taille max	XS	S	M	L	XL	XXL
H05 Hauteur totale/total height			58,40	59,85	61,35	62,85	65,10	67,35
W05 1/2 largeur poitrine/1/2 chest width	2,5%	2,0%	42	44	46	48	51	54
H15 longueur manche / Sleeve length			9,80	10,80	11,80	12,80	14,05	15,30

CARE LABEL				

PACKING	
Box	25 pcs / box XS => L:44cm W:33cm H:17cm GW:6.40kg NW:5.00kg S => L:44cm W:33cm H:17cm GW:6.40kg NW:5.00kg M => L:44cm W:33cm H:17cm GW:6.40kg NW:5.00kg L => L:44cm W:33cm H:17cm GW:6.40kg NW:5.00kg XL => L:47cm W:33cm H:17cm GW:7.10kg NW:5.60kg XXL => L:47cm W:33cm H:17cm GW:7.10kg NW:5.60kg