



tk003

## B&C #E150 LSL /kids

B&C  
COLLECTION

### Composition

100% pre-shrunk, ring-spun cotton (investing in Better Cotton\*)

\* By choosing our cotton products, you're supporting our investment in Better Cotton's mission

### Size

5-6, 7-8, 9-11, 12-13, 15+

### Packing

10 pcs/pack & 50 pcs/carton

### Weight

145 g/m<sup>2</sup>

### Color Note

Sport Grey: 85% pre-shrunk ring-spun cotton /15% viscose

### Details

Meet the ultimate long-sleeve tee that's built for kids. The B&C #E150 LSL /kids is a durable, modern t-shirt with a great gender neutral look for boys & girls, from kid to teen. Made from our legendary, sustainable, #E150 single jersey, and neck label free, it is the perfect canvas for customisation #premium printing surface. Its wide size range, from 5/6 to 15+, completes the B&C #E150 LSL styles. Ideal for adults and kids of all ages! Pair it with adult B&C #E150 LSL styles for coordinated looks.

### #Features

Engineered for boys&girls (gender-neutral), from kid to teen #inclusive

Tubular construction #movement

Thin collar rib for modern appearance #uptodate

Back necktape for a clean finish #comfort

Available in 5 colours and 5 sizes (5/6 to 15+)

Matching adult style: B&C #E150 LSL

### #Quality/Handfeel

100% cotton #protectmyskin #Oeko-Tex100

Resistant fabric and soft handfeel #ringspun

Proven B&C quality fabric #20years

"B&C No Label" solution for easy rebranding #customise

### #Sustainability

B&C, now sourcing 100% more sustainable fibres

Supporting responsible cotton production through Better Cotton\*

Recyclable at end of life

\* This product is sourced via a system of mass balance and therefore may not contain Better Cotton.



### Colors



### Sustainability



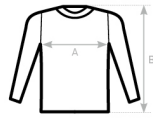
### Care instructions



All our products are tested and approved using all main print techniques.

View on the website





<b>B&amp;C #E150 LSL /KIDS TK003</b>	1/2 80-92	3/4 98-104	5/6 110-116	7/8 122-128	9/11 134-146	12/13 152-164	15+ XS
A HALF CHEST	-	-	33	36	39,5	43	46,5
B BODY LENGTH FROM NECK POINT	-	-	48	51	54,5	58	61,5

View on the website

