



50 % Bio-Baumwolle / 50 % Merinowolle RWS* 5 gg Strick Bequemer Schnitt mit Ballonärmeln 1x1-Strickbündchen an Halsausschnitt, Ärmeln und Saum In Form gestrickt („fully fashioned“) * Responsible Wool Standard

620 g/m² ♀

Größen

XS - S - M - L - XL

Zusätzliche Informationen

Logistik

5 10

Herkunftsland



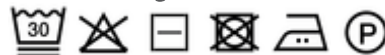
BD - Bangladesch

Zolltarifnummer



61102099

Waschanleitung



Farben

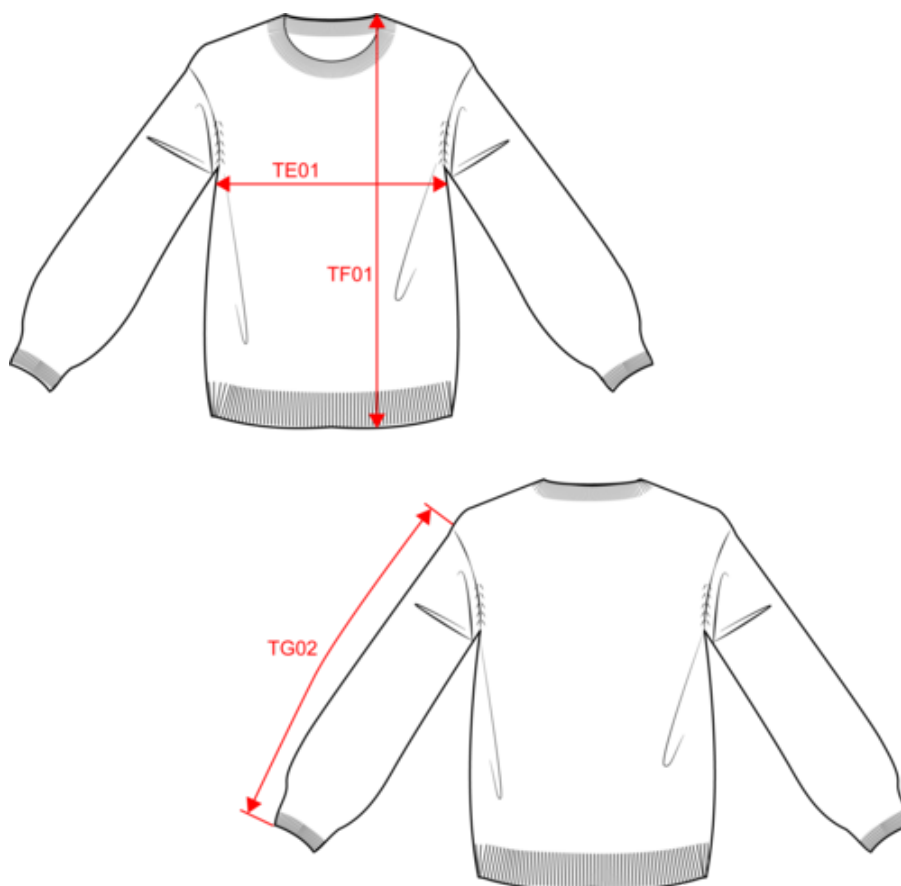
Ivory Navy Blue

Zertifikate



NS920
Damenpullover aus Merinowolle

Maße



Measurements in cm	XS	S	M	L	XL
TE01 - 1/2 chest width at 1.5cm below armhole	50.00	53.00	56.00	59.00	62.00
TF01 - Total height from HSP	56.00	58.00	60.00	62.00	64.00
TG02 - Long sleeve length	45.00	46.00	47.00	48.00	49.00

NS920

Damenpullover aus Merinowolle

Farbinformationen



Ivory
 RVB : 236,231,218
 Pantone C : 7534C
 Pantone TCX : 11-0701TCX



Navy Blue
 RVB : 41,45,57
 Pantone C : 433C
 Pantone TCX : 19-4010TCX

Logistik



5



10

Sizes	Width (cm)	Height (cm)	Length (cm)	Net weight (kg)	Gross weight (kg)	Pieces/Box	Pieces/Bundle
XS	40.00	40.00	60.00	5.40000	7.40000	10	5
S	40.00	40.00	60.00	5.90000	7.90000	10	5
M	40.00	40.00	60.00	6.43000	8.43000	10	5
L	40.00	40.00	60.00	6.97000	8.97000	10	5
XL	40.00	40.00	60.00	7.54000	9.54000	10	5