

B&C MULTI-ACTIVE /WOMEN - JW 826

MIDDLE WEIGHT JACKET




Middle weight multi-use jacket with comfortable fleece lining


POLYESTER 210T TAFFETA

Outer layer: 100% polyester 210T taffeta

Body lining: 100% polyester anti-pilling micro-fleece

Sleeve lining: 100% polyester quilted taffeta

 XS - S - M - L - XL - 2XL

 5 pcs/pack & 10 pcs/carton



WHITE WITH WHITE LINING



BLACK WITH WARM GREY LINING



NAVY WITH WARM GREY LINING



RED WITH WARM GREY LINING



ATOLL WITH WARM GREY LINING



DARK GREY WITH WARM GREY LINING



Showerproof



Feminine cut



Windproof



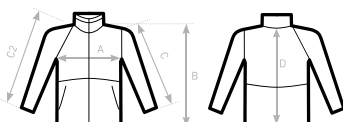
ANTI PILLING
Anti-pilling micro-fleece

- Concealed hood
- Contrasted micro-fleece lining for extra warmth
- Standing collar, adjustable hem and cuffs for great protection
- PU Coating for better water protection and breathability
- Forward seam on shoulder for better comfort and waterproofness
- 2 zippered hand pockets with overlap
- Zip at lower back gives easy full decoration access (front - back - sleeves)
- Maximised decoration areas
- Fabric tested for the following decoration techniques: screen printing, heat transfer, sublimation (for white only) and embroidery



DUO
CONCEPT

with B&C Multi-Active /m.



C2= RAGLAN

SIZES [CM]

B&C MULTI-ACTIVE /WOMEN JW 826

	XS	S	M	L	XL	2XL
A HALF CHEST	49	52	55	58	61	64
B BODY LENGTH FROM NECK POINT	69	71	73	75	77	79
C SLEEVE LENGTH	61	62	63	64	65	66
D CENTER BACK LENGTH	67	69	71	73	75	77

B&C
COLLECTION

**OUTER
WEAR
/UNIT**